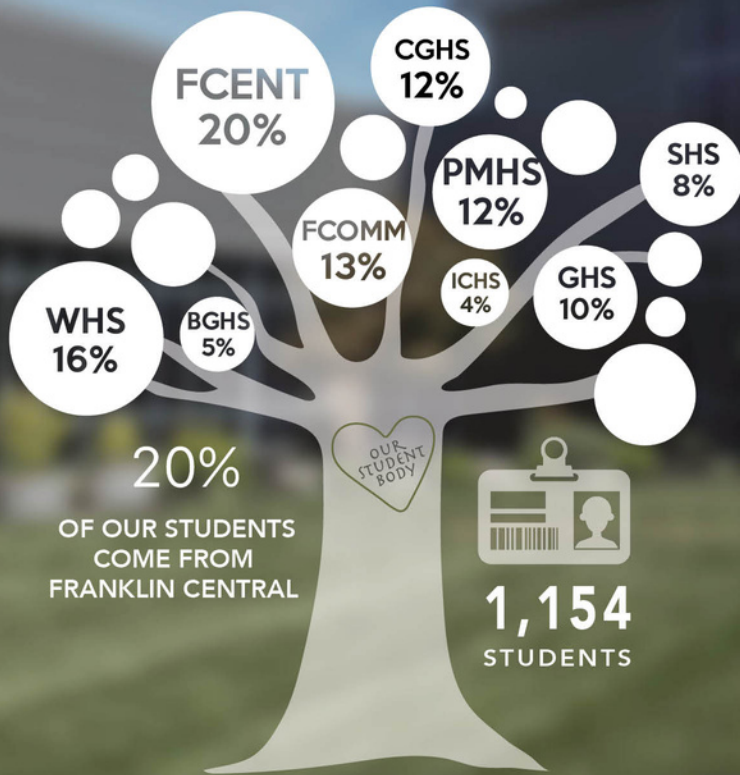


# STUDENT ENROLLMENT IN EACH CENTRAL NINE CAREER PATH



**35** INDUSTRY RECOGNIZED CERTIFICATIONS

APPROXIMATELY **197.5** DUAL CREDIT OPPORTUNITIES

**200** STUDENTS ARE INVOLVED IN WORK BASED LEARNING

